

TEST & HOBBY KILNS

Available with either the V6-CF keypad, or the Genesis touch screen, these kilns are perfect as test kilns, doll kilns, or hobby kilns. The 119D runs off of 120 volts (18 amps), and the 18" diameter models are all under 30 amps on a household 240 volt circuit. If you have limited space, or limited power available, any of these models are excellent choices. All 4 models have A1 heating elements, and use our standard double wall design, equating to a 32% energy savings thanks to the 2.5" brick being backed up by 1" of block insulation. The 1822D comes with a floor heating element and 2 thermocouples, creating perfectly even firings from top to bottom. Tucker's Cone Art kilns set the standard for excellence in quality construction and reliability, and easily fire to cone 10. The jacket and fittings are all stainless steel or corrosion resistant metal. The safety lid switch, and Integrated Vent System are available options.

STANDARD FEATURES



Double Wall Construction



Easy Access Panel



BX119D

BX1813D

BX1818D

BX1822D

119D & 18-- SERIES SPECIFICATIONS



Model	Dimensions (inches): w (x l) x h Inside Outside	Sections	Cubic Feet	Ship Weight (lbs)	Phase	Amps 240V 208V	Breaker Rqd**	CU Wire GA (AWG)	kW
119D	11 x 9 18 x 14	1	0.57	130	1	18 (120V)	20A	12	2.2
1813D	17.5 x 13.5 24.5 x 18.5	1	1.98	200	1	19 21	30A	10	4.5
1818D	17.5 x 18 24.5 x 23	1	2.64	220	1	24 28	30A, 40A	8	5.4
1822D	17.5 x 22.5 24.5 x 27.5	1	3.3	240	1	28 32	40A	8	6.7

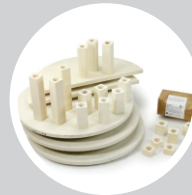
CONTROLLER OPTIONS*



CAPACITY GUIDE*

1813D	26 Cups
1818D*	26 Cups or 39 Cups
119D	6 Cups
1822D	39 Cups

AVAILABLE ADD-ONS*



*Refer to our Capacity Guide and Options & Add-Ons pages for details